

Alex Collado  
QingFuji Peptides

Avenel, NJ 07001



**Project** 145088  
**Lab #** 201770  
**Date Rec'd** 2/20/2026  
**Report Issued** 3/9/2026

## Certificate of Analysis



**Compound** NAD+  
**Label Claim** 500 mg  
**Batch/Lot**

<u>Analyte</u>	<u>Result</u>	<u>Units</u>	<u>LOQ</u>	<u>% of Label</u>	<u>Method</u>	<u>Date</u>	<u>CAS</u>
<b>Peptide Analysis</b>							
Chromatographic purity	99.89	%	0.5		HPLC-UV/MS	2/27/2026	
NAD+	505	mg	0.5	101.0	HPLC-UV-MS	2/27/2026	53-84-9
NAD+	ID Confirmed				HPLC-UV-MS	2/27/2026	

The data presented are from the analysis of the sample shown and meet Krause Analytical internal quality assurance criteria unless otherwise flagged.

Methods shown reference current Krause Analytical SOPs

ND - Not detected LOQ - limit of quantification

All values reported on a per vial basis unless otherwise noted

Copyright © 2026 Krause Analytical LLC. All rights reserved.

Respectfully submitted,

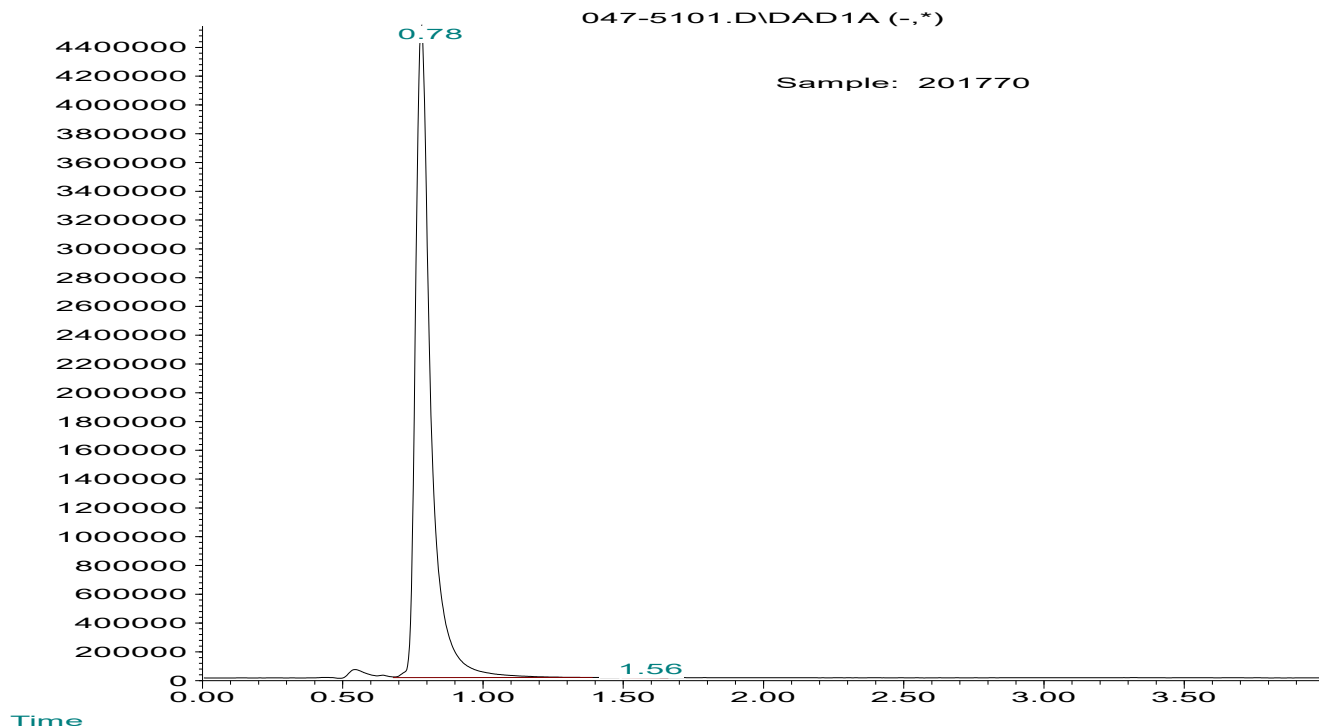
Mark C. Krause  
Laboratory Director



krause analytical

### Chromatogram

Response\_



Time

### Mass spectrum/Reference Spectrum

